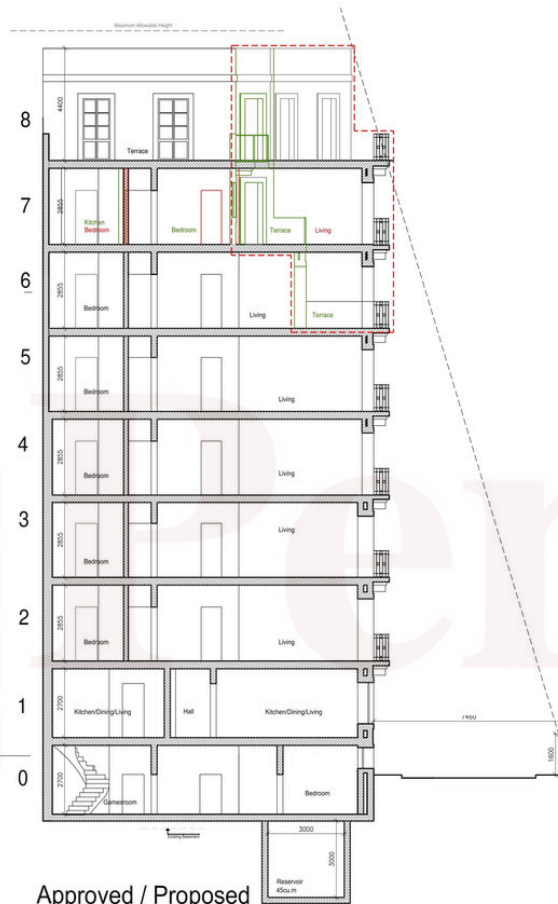
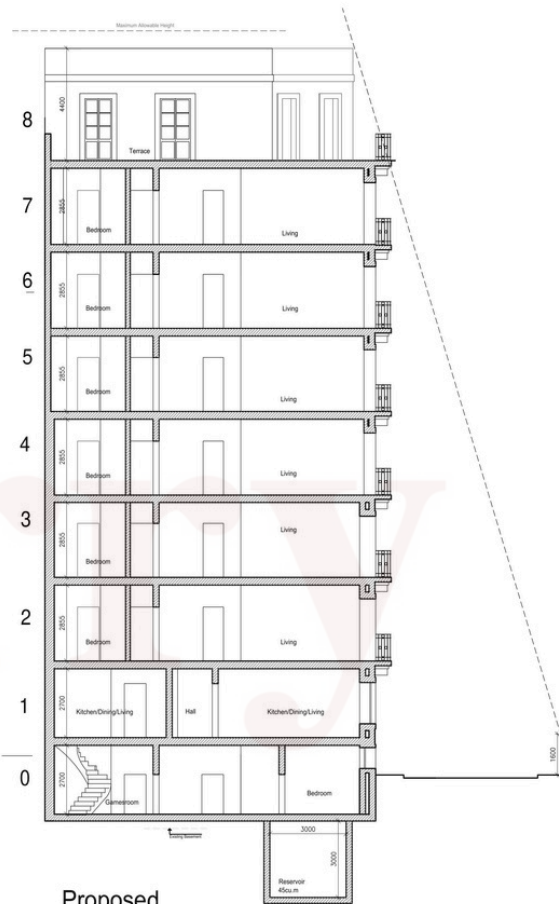


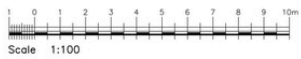
Approved
Section A

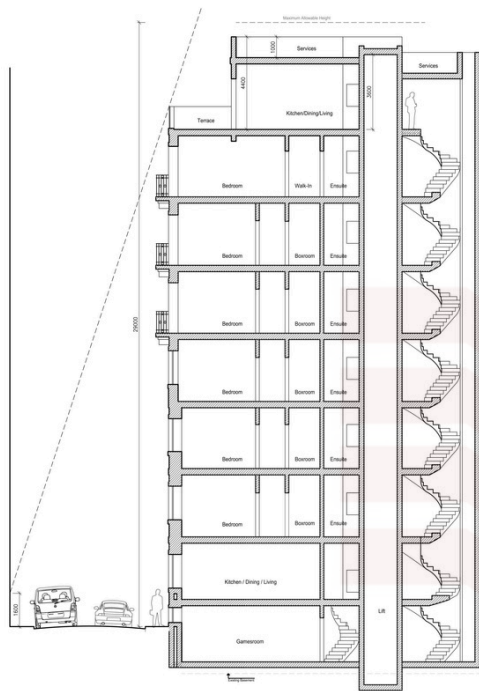


Approved / Proposed
Section A

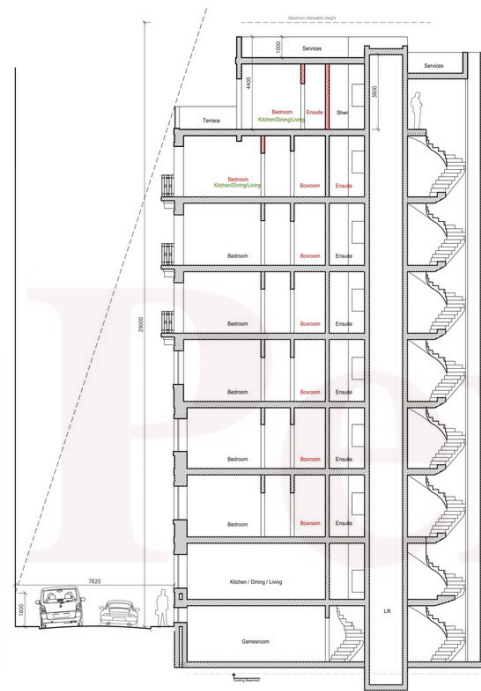


Proposed
Section A

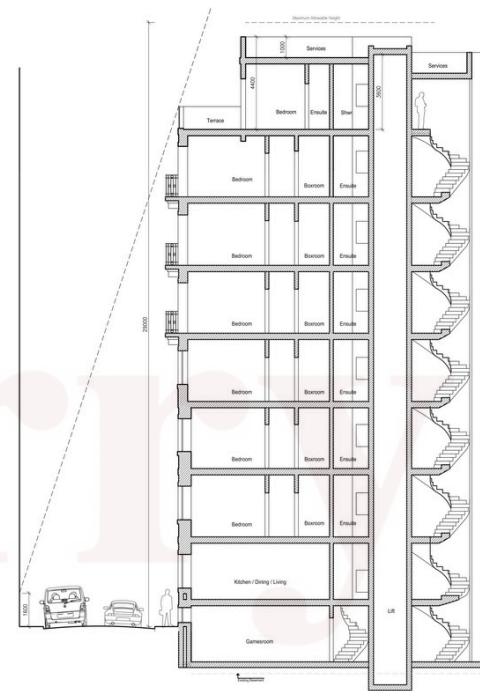




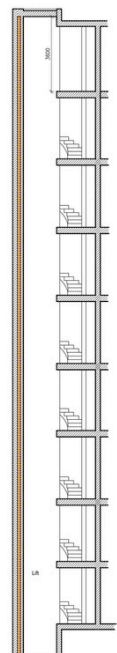
Approved Section B



Approved / Proposed
Section B

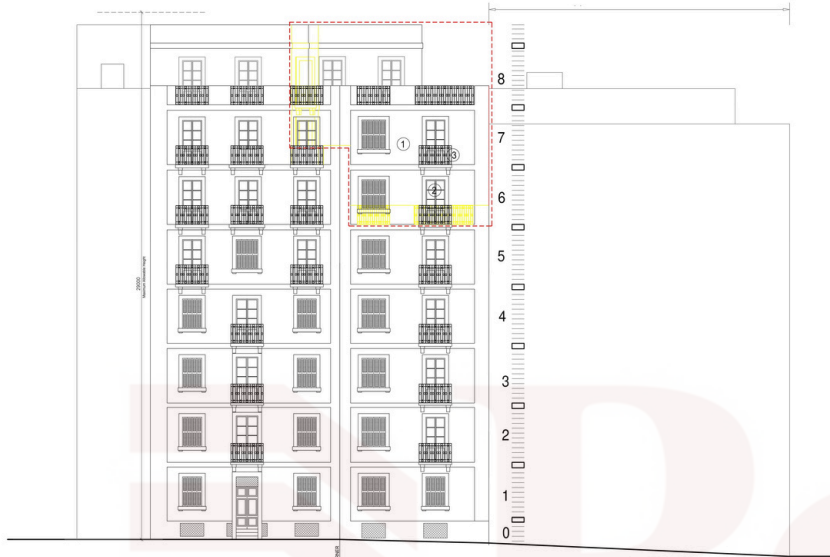


Proposed Section B



Approved / Proposed
Section C

Scale 1:100



APPROVED / PROPOSED ELEVATION



APPROVED ELEVATION



PROPOSED ELEVATION

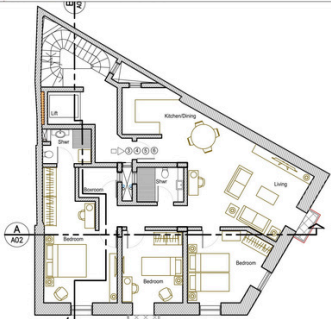


PROPOSED STREETSCAPE ELEVATION -

PROPOSED STREETSCAPE ELEVATION -

STREETSCAPE ELEVATION -





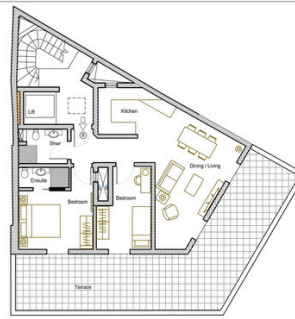
Approved / Proposed
Typical 2-5 Floor
GFA Apartments Nos 3, 4, 5 & 6 = 115sqm



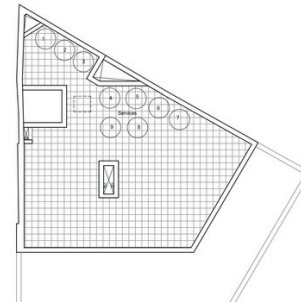
Proposed 6th Floor
GFA Apartment No 7 = 115sqm



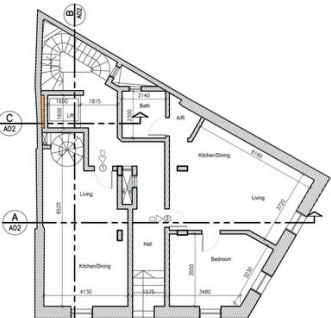
Proposed 7th Floor
GFA Apartment No 8 = 115sqm



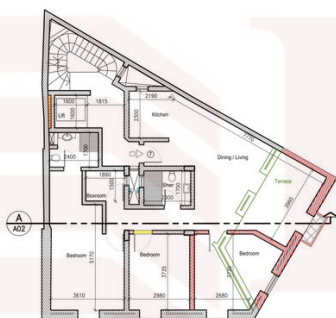
Proposed 8th Floor
GFA Apartment No 9 = 115sqm
GFA Terrace = 44.5sqm



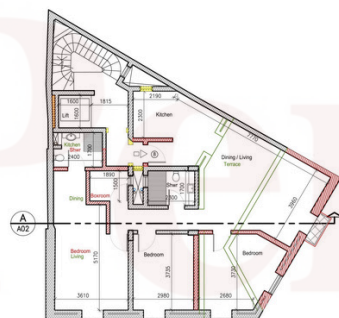
Proposed Roof over 8th Floor



Approved / Proposed 1st Floor
GFA Apartment No 2 = 115sqm
GFA Apartment No 1 = 120sqm (Duplex)



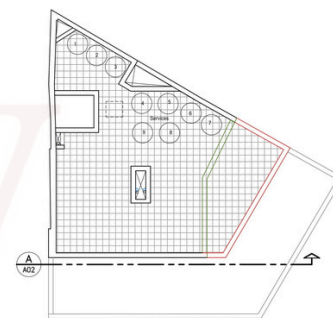
Approved / Proposed 6th Floor
GFA Apartment No 7 = 115sqm



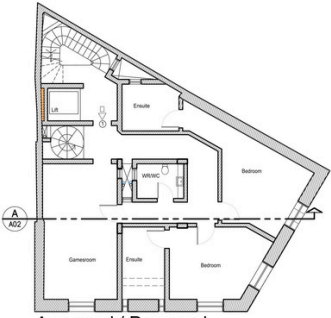
Approved / Proposed 7th Floor
GFA Apartment No 8 = 115sqm



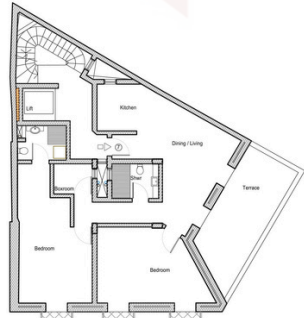
Approved / Proposed 8th Floor
GFA Apartment No 9 = 115sqm
GFA Terrace = 44.5sqm



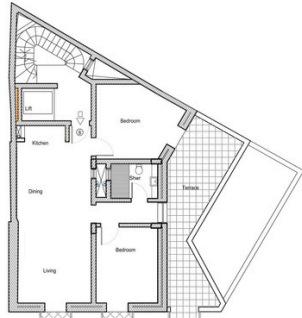
Approved / Proposed Roof over 8th Floor



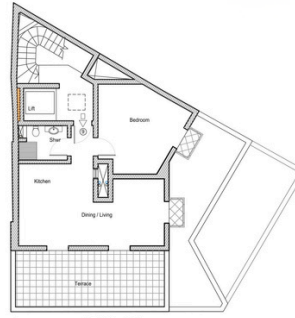
Approved / Proposed
Semi Basement Floor - 0
GFA Apartment No 1 = 105sqm (Duplex)



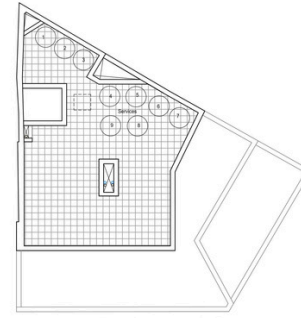
Approved 6th Floor
GFA Apartment No 7 = 115sqm
GFA Terrace = 10.5sqm



Approved 7th Floor
GFA Apartment No 8 = 115sqm
GFA Terrace = 10.5sqm



Approved 8th Floor
GFA Apartment No 9 = 115sqm
GFA Terrace = 20sqm



Approved Roof over 8th Floor



Scale 1:100